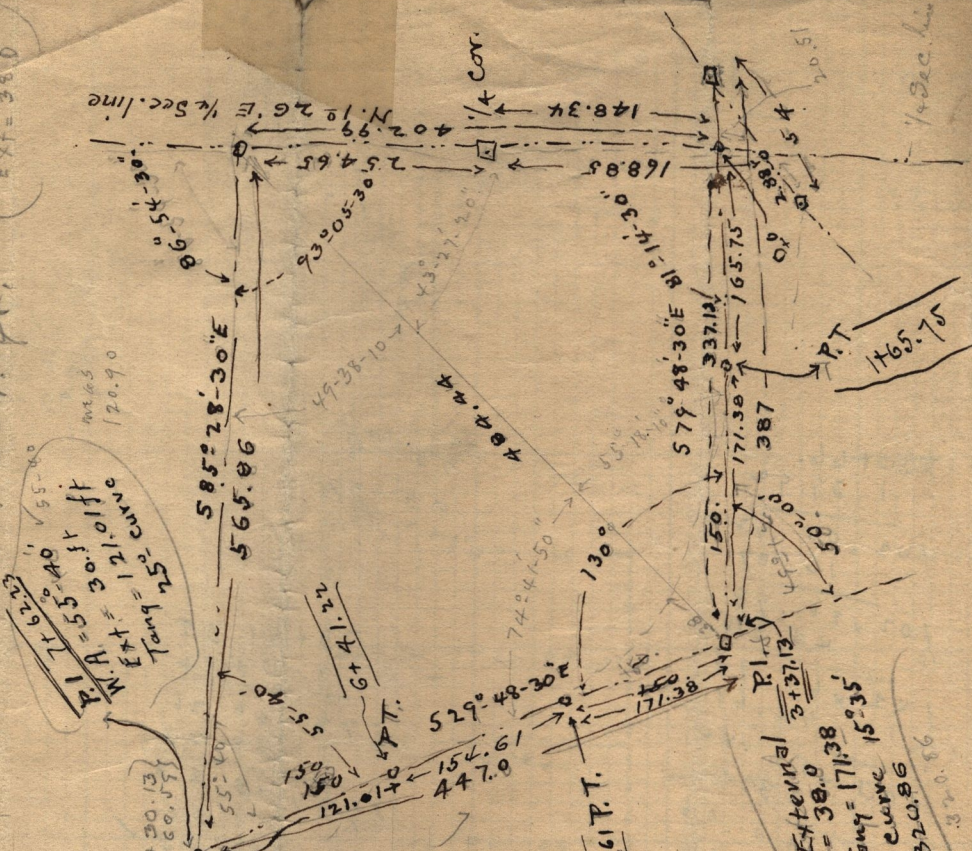


Deflection 25° curve  
 0-00 P.C. 50-40 27.4  
 1-05.85  
 4-13.35  
 7-20.85  
 11-28.35  
 13-35.85  
 16-43.35  
 19-50.85  
 22-58.35  
 26-05.85  
 27-50' P.T.

External Secant  
 at 49° 2' = 38.7 ft. from curve  
 Tangents to be 150.0 ft. (171.38 ft. = 150.0  
 150.0 = 35.0  
 Ext = 38.0

M.A. = 55° 40'  
 EXT = 30.01 ft  
 Temp = 12.01 ft  
 W.C. curve  
 120.90

Sta.	Deflection
6+41.22	0°-00'
6+50	1°-05.85
6+75	4°-13.35
7+00	7-20.85
7+25	11-28.35
7+50	13-35.85
7+75	16-43.35
8+00	19-50.85
8+25	22-58.35
8+50	26-05.85
8+63.89	27-50' P.T.



Sta	deflection (Curve = 15° 35')
1+65.75	0°-00'
1+75	0°-43.24
2+00	2-40.11
2+25	4-36.98
2+50	6-33.85
2+75	8-30.72
3+00	10-27.59
3+25	12-24.46
3+50	14-21.35
3+75	16-18.23
4+00	18-15.10
4+25	20-11.98
4+50	22-08.85
4+75	24-05.72
4+86.61	25°-00'

External NA = 50°  
 = 38.0  
 Temp = 171.38  
 Curve 15° 35'  
 C = 320.86  
 320.86

Chrymwood  
 5+00  
 37.0  
 34.0  
 20